

Is your finishing process polished?

## FINISHING

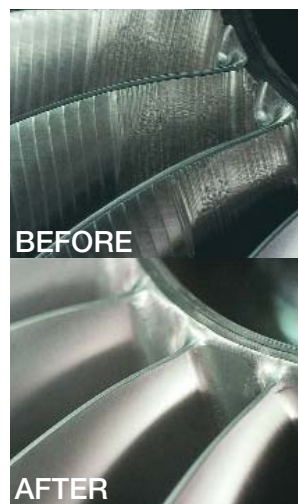
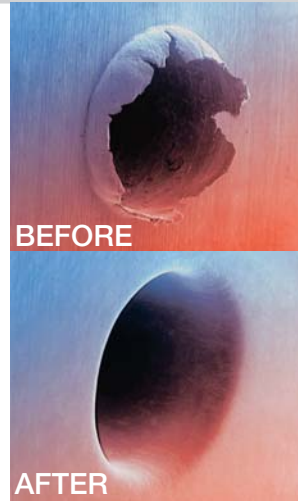
Through our Extrude Hone group, Kennametal provides advanced manufacturing technologies to produce the highest quality engineered surfaces and edges in the world.

*“The most important aspects of a part are its surfaces and edges. (The rest of the part is there merely to hold the surfaces and edges together!)”*

### Deburring, Polishing, and Surface Finishing

We offer a complete menu of deburring, polishing, and surface finishing solutions, including machine tools, Contract Finishing Services, and development of advanced manufacturing processes for various global markets, including:

- Automotive
- Diesel Fuel Systems
- Aerospace and Gas Turbine
- Fluid Power
- Die and Mold
- Medical
- Power Generation and Turbines
- General Engineering



### Our advanced finishing processes include:

- AFM — Abrasive Flow Machining.
- ECM — Electrolytic Machining and Deburring.
- TEM — Thermal Energy Method Deburring.
- PCT — Precision Cleaning Technology.



Vector AFM machine

C-250 TEM machine



EcoLine ECM machine



Extrude Hone

## More Than Deburring and Polishing...

### Reduce Your Machining Costs

- Reduce costs through state-of-the-art, automated processes.
- Shorten overall processing times and eliminate manual hand work.
- Improve small batch and mass production capabilities.

### Improve Your Product Quality

- Extend service life and increase operational reliability of component parts.
- Reduce instances of product failure or fatigue due to stress risers.
- Highly controllable — reduce incidence of defective or out-of-tolerance components.

### Deburring, Edge Radiusing, Contouring, and Polishing Solutions

- All processes are capable of both internal and external finishing.
- More consistent results over conventional, low-tech methods.
- No secondary burrs created.

### Unconventional Processing Technologies From a Single, Reliable Source

- Four decades of experience in deburring and surface finishing technologies.
- Worldwide references and resources.



### Deburring or Finishing Problems?

#### We've Seen It Before...

We've solved thousands of complex deburring, edge radiusing, and surface finish problems for our customers. Before you spend valuable time on your problem job, we may already have the solution.

### Kennametal Complete...

Kennametal Complete focuses the resources of the metalworking industry's leading offering of products and services to help you **reduce production costs, improve productivity, achieve operational excellence, increase profitability, strengthen customer loyalty, and thrive in an increasingly competitive marketplace.**

To learn more about how Kennametal Complete can boost your bottomline, contact your Kennametal Representative or visit [www.kennametal.com/completeservices](http://www.kennametal.com/completeservices) today!



Extrude Hone